

New York
Chesapeake Bay Watershed Initiative
(CBWI)
Results in the
Chesapeake Bay Watershed

July 7, 2011

NOTICE TO HISPANIC AND/OR WOMEN FARMERS COMPENSATION FOR CLAIMS OF DISCRIMINATION

If you believe that the United States Department of Agriculture (USDA) improperly denied farm loan benefits to you between 1981 and 2000 because you are Hispanic or because you are female, you may be eligible to apply for compensation.

If you want to register your name to receive a claims package, access the Hispanic and Women Farmer and Rancher Call Center or website:

Call Center: 1-888-508-4429

Website: www.farmerclaims.gov

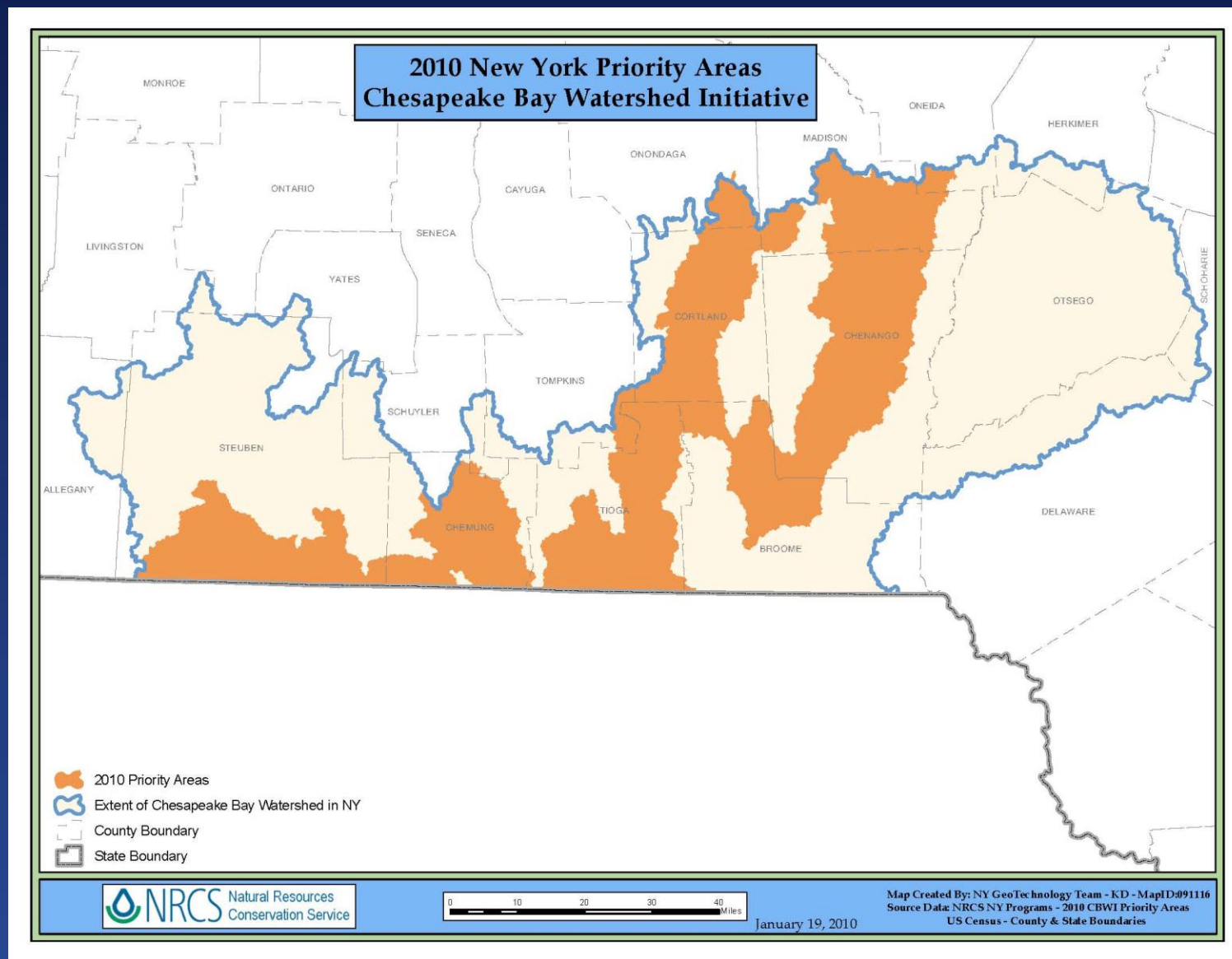
For guidance, you may contact a lawyer or other legal services provider in your community. USDA cannot provide legal advice to you.

Conservation Beyond Boundaries

Chesapeake Bay Watershed Initiative

- Chesapeake Bay is the nation's largest estuary.
 - 64,000 square miles
 - More than 150 significant tributaries
- Large variety of wildlife call the watershed home.
 - More than 300 species of fish
 - numerous birds, shellfish, amphibians
- Pollution and sedimentation contribute to water quality at local level and cumulatively to the bay as a whole.
- NRCS and conservation partners work with farmers and foresters to improve water quality, restore wetlands and enhance wildlife habitat.





Conservation Beyond Boundaries Chesapeake Bay Watershed Initiative

- **Geographic area**: Delaware, New York, Maryland, Pennsylvania, Virginia and West Virginia
- **Objective**: Restore and protect local water quality and the Chesapeake Bay
- **NRCS priorities**: Minimize agricultural pesticide, nutrient and sediment losses to surface water
- **Conservation practices**: Include—but not limited to—waste storage facilities, heavy use area protection, cover crops, nutrient management and fencing
- **Programs**: CBWP (EQIP, WHIP and others)
- **FY2010 Financial Assistance (FA) allocated**: \$1,974,654
- **FY 2011 FA allocated**:
 - \$2,877,427 15% Reduction
- **FY2012 FA allocated**: Same as FY11

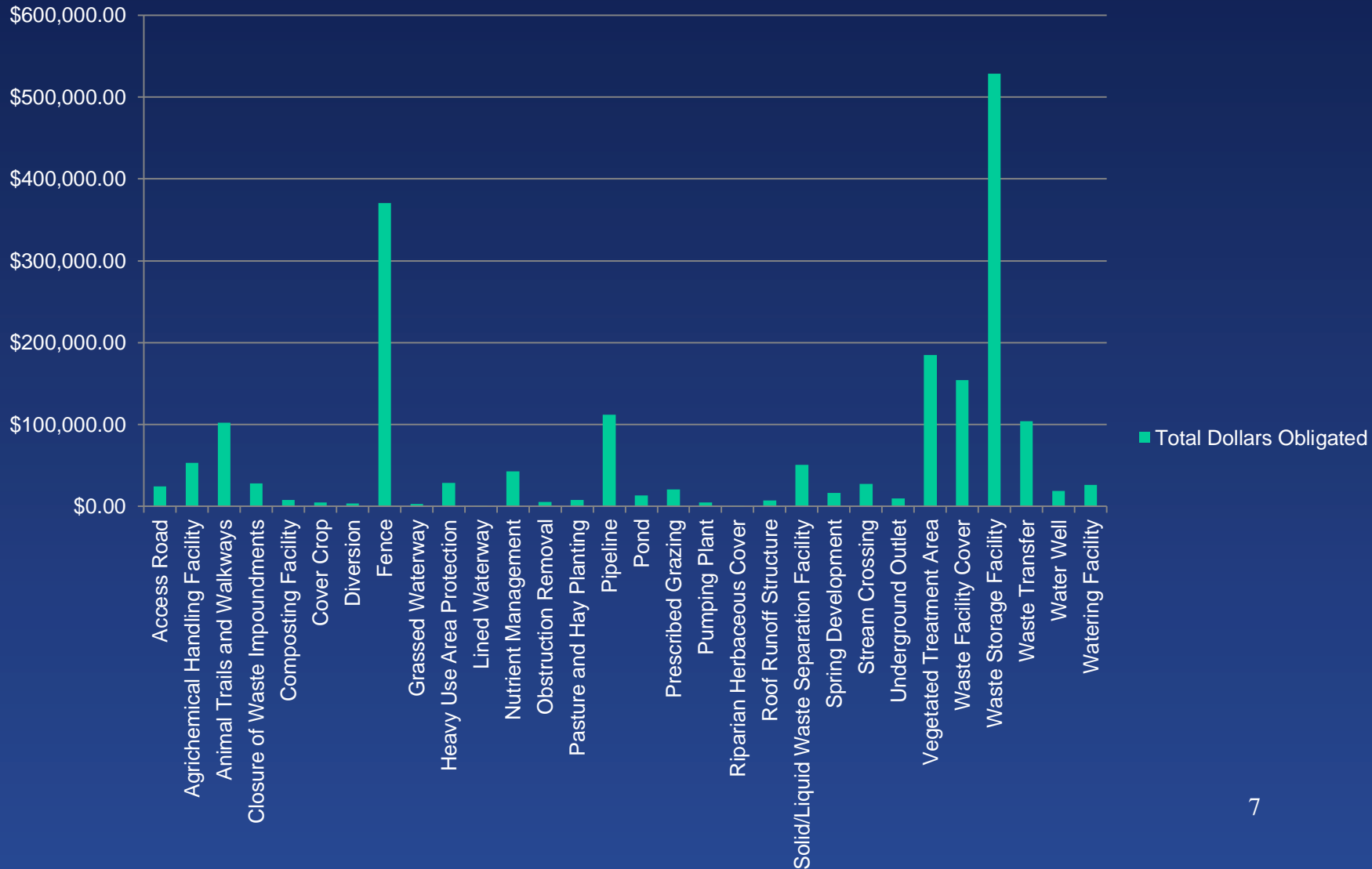


Chesapeake Bay Watershed Initiative Accomplishments

- Prioritized conservation effort (practice implementation) to watersheds that contributed the highest nitrogen, phosphorus and sediment from agricultural sources.
- In FY 2011, NRCS approved 813 new CBWI contracts.
- More than 97 percent of the new contracts were in priority watersheds
- 100 percent of new contracts in or adjacent to priority watersheds
- Program works to sustain agriculture and protect the bay's water resources by improving environmental quality.



FY 2011 Practices / Dollars Obligated



2012 Program Updates

- Anticipate no major changes to the priority areas or the program as a whole
- Partner involvement continues through the State Technical Committee
- FY2011 Funding Allocation levels

Questions



Non-Discrimination statement

"The U.S. Department of Agriculture (USDA) prohibits discrimination in all of its programs and activities on the basis of race, color, national origin, age, disability, and where applicable, sex, marital status, familial status, parental status, religion, sexual orientation, political beliefs, genetic information, reprisal, or because all or part of an individual's income is derived from any public assistance program. (Not all prohibited bases apply to all programs.) Persons with disabilities who require alternative means for communication of program information (Braille, large print, audiotape, etc.) should contact USDA's TARGET Center at (202) 720-2600 (voice and TDD)."